

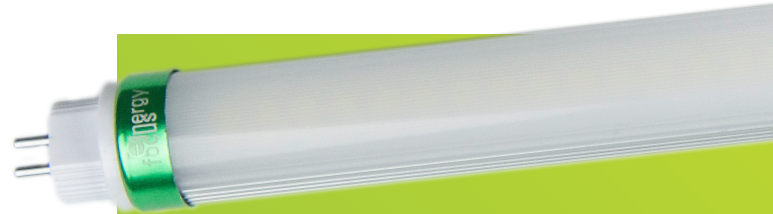
# Commercial T5 High Output Series LED Tube

## LINEAR FLUORESCENT RETROFIT LAMP

For: T5 HO lamp replacement

### FEATURES AND BENEFITS

- Efficacy of 130/140LPW
- Integrated driver, Type-B (Direct-Wire)
- Double ended input for simple rewiring and shorter install time
- Bypasses ballast for maximum energy savings
- G5 UL listed lampholders for 100-277VAC included
- Flicker-free LED Lighting



### PRODUCT SPECIFICATIONS

Length	46" versions available. Meets ANSI standard
Body	Oval extruded aluminum/ polycarbonate lens
Lens	Frosted/Clear (striated)
Connection	Mini bi-pin (G5) endcap
Input Voltage	100-277vac, 50/60hz
Driver	Double ended (end-to-end) input; integrated LED driver
Available colors	3500K 4000K 5000K
CRI	>80
Dimming	Non-dimmable
Lifetime	L70 ≥ 60,000 hours
Warranty	10-year warranty
Environmental Requirements	<b>Operating temp:</b> -20° to 50°C <b>Storage temp:</b> -30° to 60°C <b>Working humidity:</b> 30% to 85% <b>Storage humidity:</b> 10% to 90% <b>Non-corrosive environments</b>
Power Factor	>0.9
Beam Angle	120°



## PRODUCT SPECIFICATION

PARTNUMBER	SIZE NOMINAL	POWER	LUMINOUSFLUX	ULPARTNUMBER	DLCFAMILY
LEDFLT5-835-426-302C	(46") 4'	26W	3640lm	3BJ10266	EAEFPX
LEDFLT5-840-426-302C	(46") 4'	26W	3640lm	3BJ10266	EAEFPX
LEDFLT5-850-426-302C	(46") 4'	26W	3640lm	3BJ10266	EAEFPX
LEDFLT5-835-426-3B2C*	(46") 4'	26W	3640lm	3BJ10266	EAEFPX
LEDFLT5-840-426-3B2C*	(46") 4'	26W	3640lm	3BJ10266	EAEFPX
LEDFLT5-850-426-3B2C*	(46") 4'	26W	3640lm	3BJ10266	EAEFPX

\* B = Trade American Act Compliant version

## LINE DIAGRAM

Double-Ended Input

